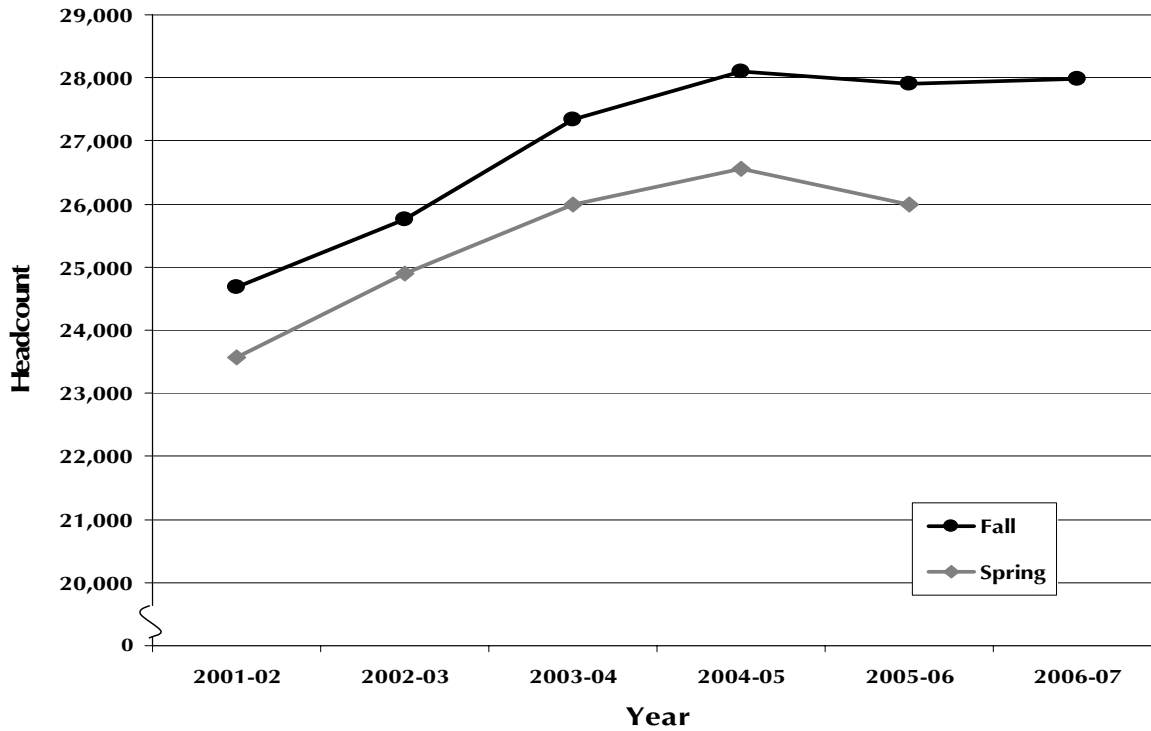


STUDENT HEADCOUNT FALL AND SPRING SEMESTERS 2002 - 2007



Fall Semesters

	Headcount	% change
Fall 2002	24,679	
Fall 2003	25,749	4.3%
Fall 2004	27,334	6.2%
Fall 2005	28,104	2.8%
Fall 2006	27,912	-0.7%
Fall 2007	27,988	0.3%

Spring Semesters

	Headcount	% change
Spring 2003	23,578	
Spring 2004	24,901	5.6%
Spring 2005	25,994	4.4%
Spring 2006	26,554	2.2%
Spring 2007	25,985	-2.1%
Spring 2008	N/A	

Note: Includes Executive MBA, BS/MS Hotel-Singapore and MS Nursing-Philippines.

Note: Graduate/Professional headcount is unduplicated.

Source: Registrar's preliminary reports