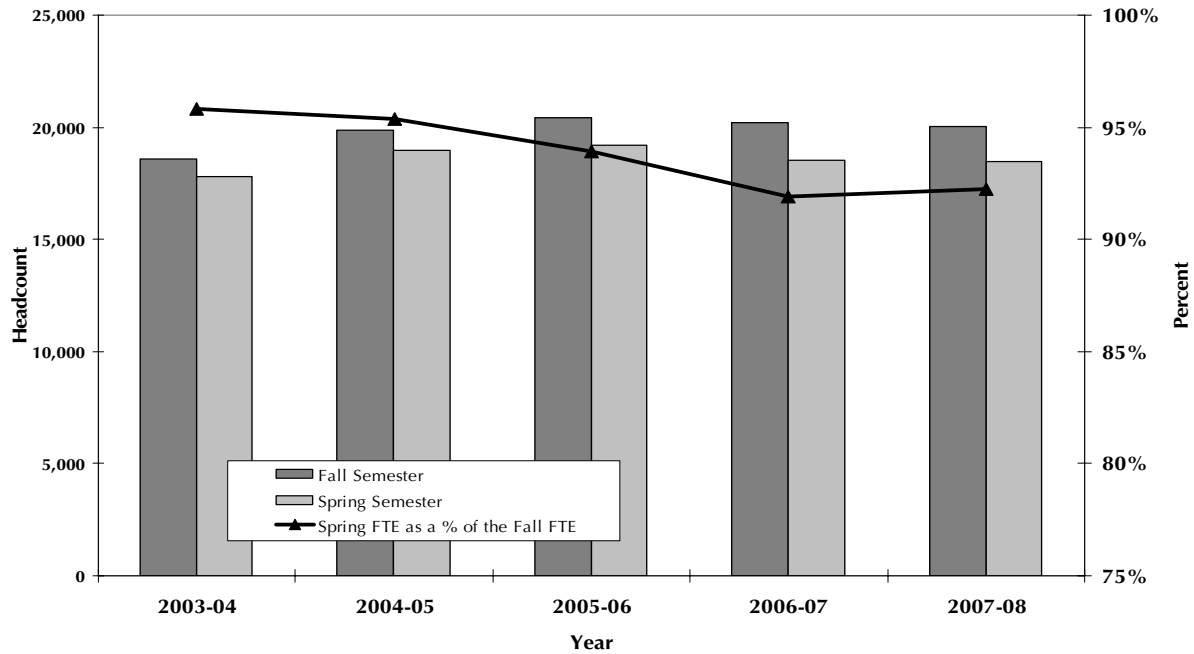


STUDENT PRELIMINARY FTE FALL AND SPRING SEMESTERS 2003-08



Fall	FTE	% change	Spring	FTE	% change	Spring FTE as a Percent of Fall FTE
2003	18,574.7	-	2004	17,796.3	-	95.8%
2004	19,886.8	7.1%	2005	18,963.1	6.6%	95.4%
2005	20,424.8	2.7%	2006	19,183.1	1.2%	93.9%
2006	20,180.4	-1.2%	2007	18,548.8	-3.3%	91.9%
2007	20,007.4	-0.9%	2008	18,455.1	-0.5%	92.2%

Note: 1) Preliminary FTE represents beginning of semester enrollment.

Source: Registrar's preliminary reports