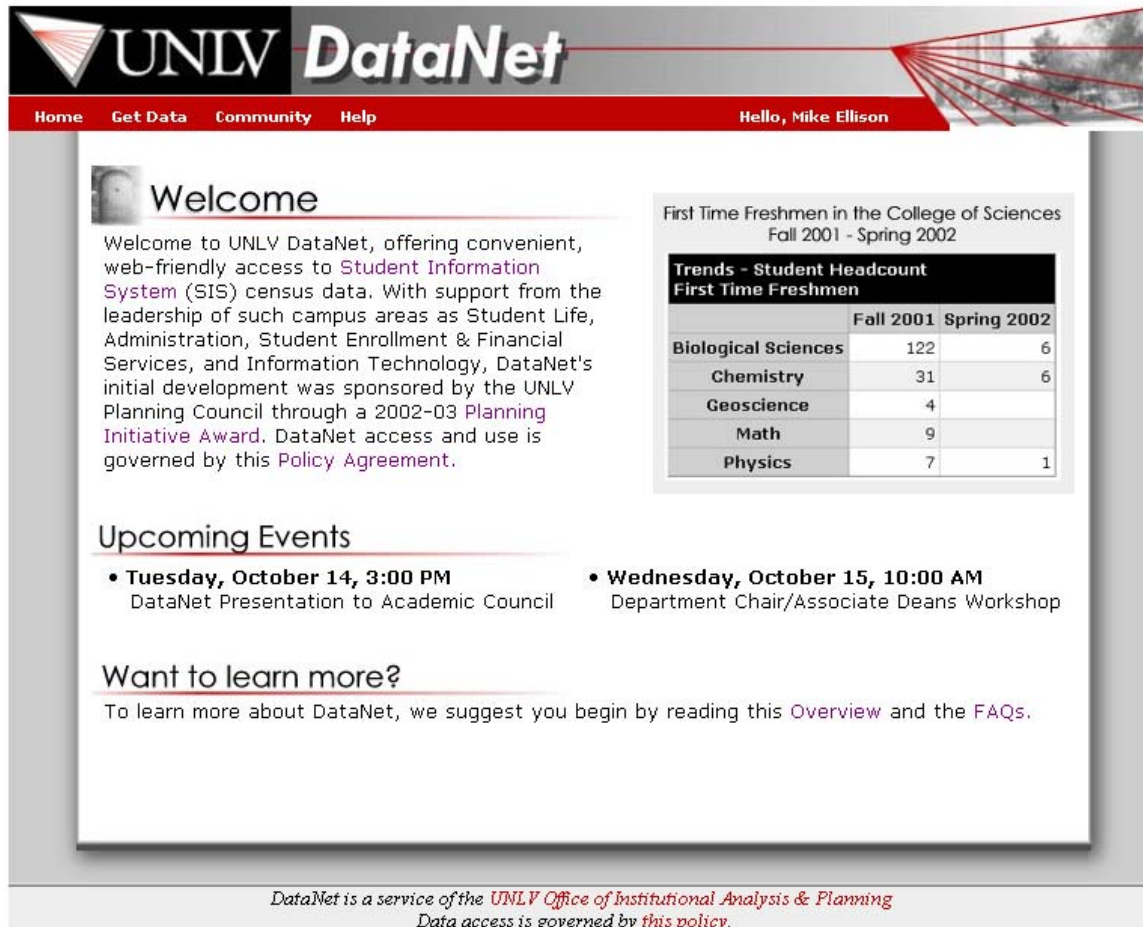


## DataNet Screen Shots



The screenshot shows the UNLV DataNet home page. At the top, there is a navigation bar with links for Home, Get Data, Community, and Help. A personalized greeting "Hello, Mike Ellison" is displayed on the right. The main content area features a "Welcome" section with a brief overview of the system and its purpose. To the right, a table titled "Trends - Student Headcount First Time Freshmen" provides data for the Fall 2001 and Spring 2002 semesters across various departments. Below this, an "Upcoming Events" section lists two events: a DataNet presentation to the Academic Council on Tuesday, October 14, and a Department Chair/Associate Deans Workshop on Wednesday, October 15. A "Want to learn more?" section suggests reading an overview and FAQs. At the bottom, a footer note states that DataNet is a service of the UNLV Office of Institutional Analysis & Planning and that data access is governed by a specific policy.

**UNLV DataNet**

Home Get Data Community Help Hello, Mike Ellison

### Welcome

Welcome to UNLV DataNet, offering convenient, web-friendly access to [Student Information System \(SIS\)](#) census data. With support from the leadership of such campus areas as Student Life, Administration, Student Enrollment & Financial Services, and Information Technology, DataNet's initial development was sponsored by the UNLV Planning Council through a 2002-03 [Planning Initiative Award](#). DataNet access and use is governed by this [Policy Agreement](#).

### Upcoming Events

- **Tuesday, October 14, 3:00 PM**  
DataNet Presentation to Academic Council
- **Wednesday, October 15, 10:00 AM**  
Department Chair/Associate Deans Workshop

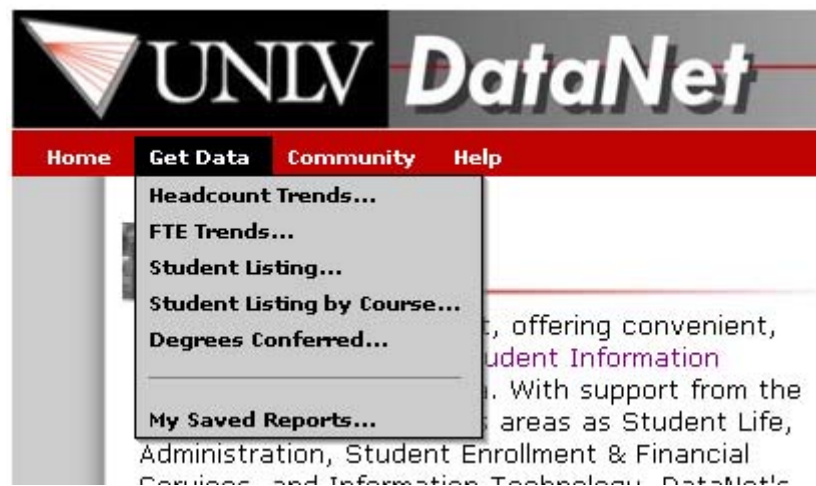
### Want to learn more?

To learn more about DataNet, we suggest you begin by reading this [Overview](#) and the [FAQs](#).

*DataNet is a service of the UNLV Office of Institutional Analysis & Planning  
Data access is governed by this policy.*

	Fall 2001	Spring 2002
<b>Biological Sciences</b>	122	6
<b>Chemistry</b>	31	6
<b>Geoscience</b>	4	
<b>Math</b>	9	
<b>Physics</b>	7	1

*DataNet Home Page*



This screenshot shows the "Get Data" menu interface. The navigation bar is visible at the top, with "Get Data" highlighted. A dropdown menu is open, listing several data categories: Headcount Trends..., FTE Trends..., Student Listing..., Student Listing by Course..., Degrees Conferred..., and My Saved Reports... The background of the page is partially visible, showing the same "Welcome" text as the previous screenshot.

**UNLV DataNet**

Home **Get Data** Community Help

- Headcount Trends...
- FTE Trends...
- Student Listing...
- Student Listing by Course...
- Degrees Conferred...
- My Saved Reports...

*Menu Interface: Get Data*

**Headcount Trends**

Terms: Recent Fall Terms

Cohort: All Students

Measure: Student Headcount

Group By:

Department  
Gender

< Add  
<<  
Remove >  
>>

Ethnicity  
Level  
Standing  
Residence  
Enrollment Status  
Major

- +

Include Totals

Additional Criteria (optional)

Field	Value
x College	Engineering
College	Engineering

Add

Display Report

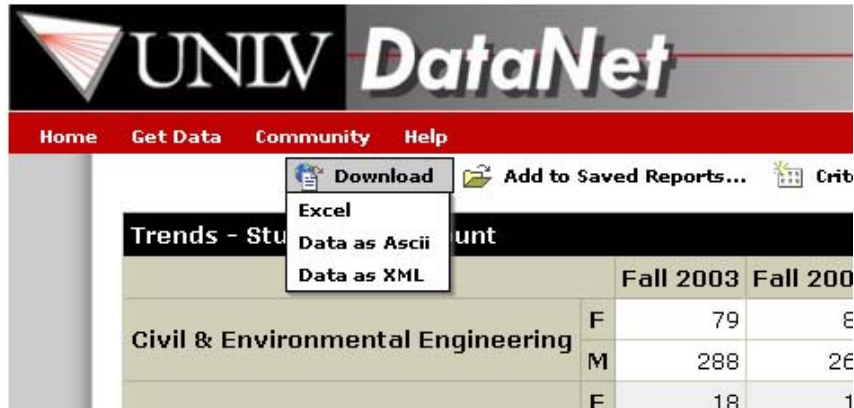
*Criteria Form Entry: Headcount Trends*

**Trends - Student Headcount**

		Fall 2003	Fall 2002	Fall 2001	Fall 2000	Fall 1999
Civil & Environmental Engineering	F	79	81	80	59	61
	M	288	267	223	212	243
College of Engineering	F	18	18	8	2	5
	M	106	71	28	18	22
Computer Science, School of	F	82	113	105	93	81
	M	330	368	365	315	267
Electrical & Computer Engineering	F	52	45	52	52	43
	M	319	279	282	263	247
Engineering/Computer Science	F	3	3	2	10	14
	M	22	24	8	32	34
Mechanical Engineering	F	32	34	25	25	22
	M	212	172	157	141	139

Parameters  
AdditionalCriteria: College=Engineering

*Report Output: Headcount Trends*



*Report Download Options*

	A	B	C	D	E	F	G
1	<b>Trends - Student Headcount</b>						
2			Fall 2003	Fall 2002	Fall 2001	Fall 2000	Fall 1999
3	Civil & Environmental Engineering	F	79	81	80	59	61
4		M	288	267	223	212	243
5	College of Engineering	F	18	18	8	2	5
6		M	106	71	28	18	22
7	Computer Science, School of	F	82	113	105	93	81
8		M	330	368	365	315	267
9	Electrical & Computer Engineering	F	52	45	52	52	43
10		M	319	279	282	263	247
11	Engineering/Computer Science	F	3	3	2	10	14
12		M	22	24	8	32	34
13	Mechanical Engineering	F	32	34	25	25	22
14		M	212	172	157	141	139

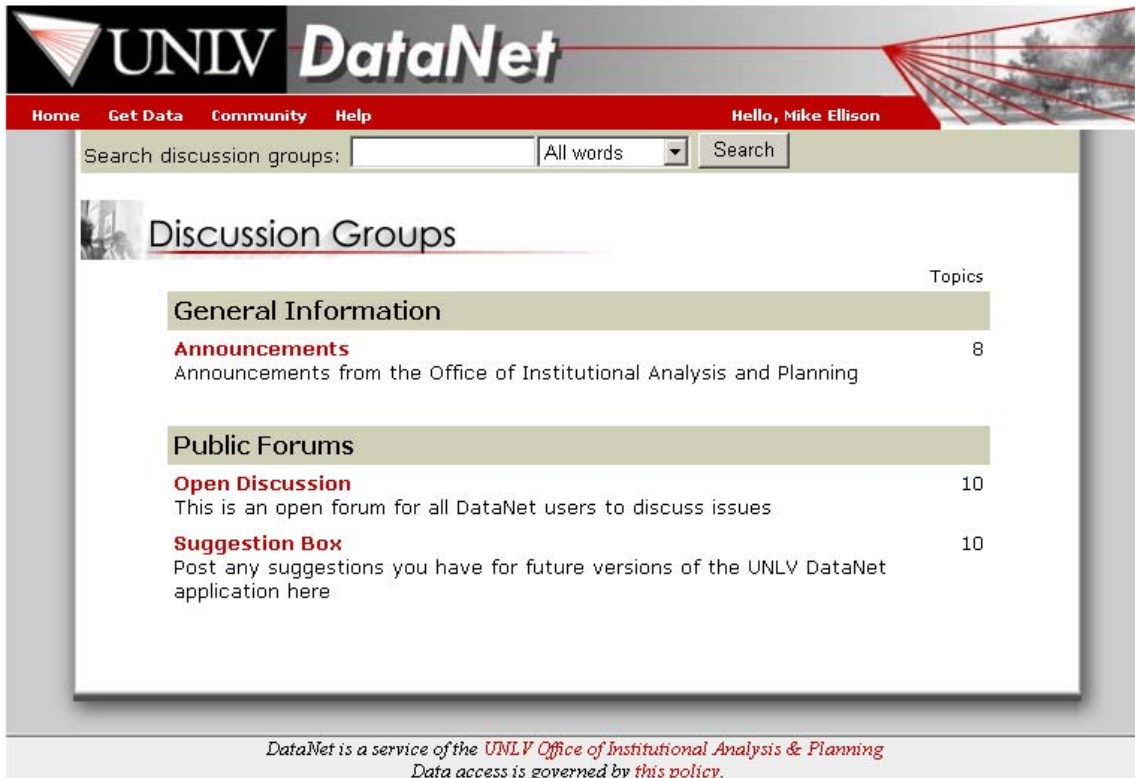
*Excel Download*

```

",",",", "Fall 2003", "Fall 2002", "Fall 2001", "Fall 2000", "Fall 1999"
"Civil & Environmental Engineering", "F", "79", "81", "80", "59", "61"
"Civil & Environmental Engineering", "M", "288", "267", "223", "212", "243"
"College of Engineering", "F", "18", "18", "8", "2", "5"
"College of Engineering", "M", "106", "71", "28", "18", "22"
"Computer science, school of", "F", "82", "113", "105", "93", "81"
"Computer science, school of", "M", "330", "368", "365", "315", "267"
"Electrical & Computer Engineering", "F", "52", "45", "52", "52", "43"
"Electrical & Computer Engineering", "M", "319", "279", "282", "263", "247"
"Engineering/Computer science", "F", "3", "3", "2", "10", "14"
"Engineering/Computer Science", "M", "22", "24", "8", "32", "34"
"Mechanical Engineering", "F", "32", "34", "25", "25", "22"
"Mechanical Engineering", "M", "212", "172", "157", "141", "139"

```

*ASCII Text Download*



UNLV DataNet

Home Get Data Community Help Hello, Mike Ellison

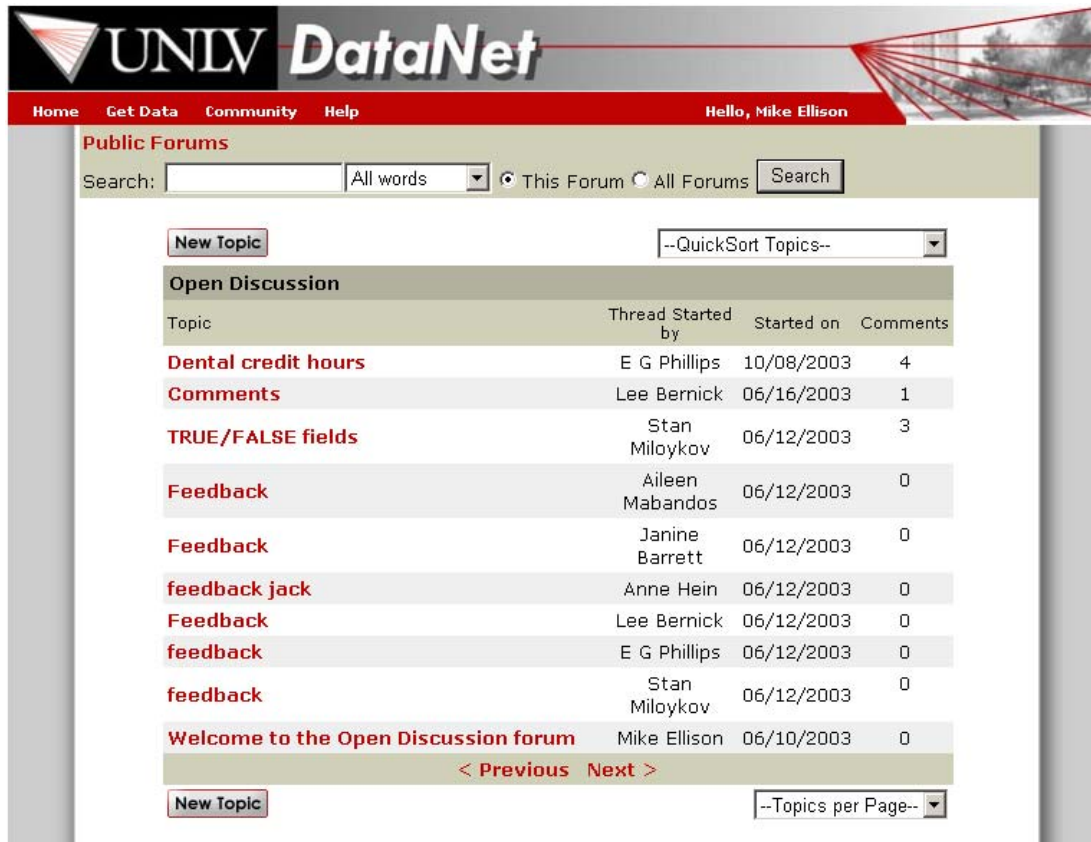
Search discussion groups:  All words

## Discussion Groups

	Topics
<b>General Information</b>	
<b>Announcements</b> Announcements from the Office of Institutional Analysis and Planning	8
<b>Public Forums</b>	
<b>Open Discussion</b> This is an open forum for all DataNet users to discuss issues	10
<b>Suggestion Box</b> Post any suggestions you have for future versions of the UNLV DataNet application here	10

*DataNet is a service of the UNLV Office of Institutional Analysis & Planning  
Data access is governed by this policy.*

*DataNet Community: Discussion Groups*



UNLV DataNet

Home Get Data Community Help Hello, Mike Ellison

Public Forums

Search:  All words   This Forum  All Forums

--QuickSort Topics--

Topic	Thread Started by	Started on	Comments
<b>Dental credit hours</b>	E G Phillips	10/08/2003	4
<b>Comments</b>	Lee Bernick	06/16/2003	1
<b>TRUE/FALSE fields</b>	Stan Miloykov	06/12/2003	3
<b>Feedback</b>	Aileen Mabandos	06/12/2003	0
<b>Feedback</b>	Janine Barrett	06/12/2003	0
<b>feedback jack</b>	Anne Hein	06/12/2003	0
<b>Feedback</b>	Lee Bernick	06/12/2003	0
<b>feedback</b>	E G Phillips	06/12/2003	0
<b>feedback</b>	Stan Miloykov	06/12/2003	0
<b>Welcome to the Open Discussion forum</b>	Mike Ellison	06/10/2003	0

< Previous Next >

--Topics per Page--

*Discussion Topics*

UNLV DataNet

Home Get Data Community Help Hello, Mike Ellison

Public Forums >> Open Discussion

Add Comment --QuickSort Comments--

Author	Post
<b>Topic</b>	
Stan Miloykov 06/12/2003 03:36 PM	<b>TRUE/FALSE fields</b> When using student listing information to generate reports and would like to specify criteria for displaying individual records, note that some fields (Millenium Scholar, for example) are displayed as TRUE/FALSE in the reports, but are treated as numeric (values 1 or 0) in the criteria section of the Criteria Form for generating reports.
<b>Comments</b>	
Mike Ellison 06/12/2003 04:03 PM	<b>Preference?</b> What would folks prefer - to see "1" and "0" for these true/false fields, or to see "true" and "false"? We'll see what we can do to make those consistent between what gets viewed and how it is entered as criteria.
Christina Drum 06/12/2003 04:56 PM	<b>My two cents</b> Would another possibility be "yes" and "no"? My inclination is that either this or the "true" and "false" option would be the more intuitive choice for more users.
Kari Coburn 06/13/2003 10:55 AM	<b>True/False fields</b> I think the intuitive route is best. For some reason, I like yes/no but that may be because they are shorter fields.

Add Comment

*Discussion Post with Comments*

UNLV DataNet

Home Get Data Community Help Hello, Mike Ellison

My Profile

**Email**  
My email address:

**Forums**  
Receive an email notification whenever a post is made to the following forums:

Announcements  Open Discussion  Suggestion Box

DataNet is a service of the UNLV Office of Institutional Analysis & Planning  
Data access is governed by this policy.

*Profile Options*



**UNLV DataNet**

Home Get Data Community Help Hello, Mike Ellison

## Calendar of Events

< October 2003 >

>>	Sun	Mon	Tue	Wed	Thu	Fri	Sat
>	28	29	30	1	2	3	4
>	5	6	7	8	9	10	11
>	12	13	14	15	16	17	18
>	19	20	21	22	23	24	25
>	26	27	28	29	30	31	1
>	2	3	4	5	6	7	8

**Events for October 14**

Event	Date	Time
DataNet Presentation to Academic Council	10/14/2003	3:00 PM

**Event:** DataNet Presentation to Academic Council

**Time:** 10/14/2003, 3:00 PM - 3:30 PM

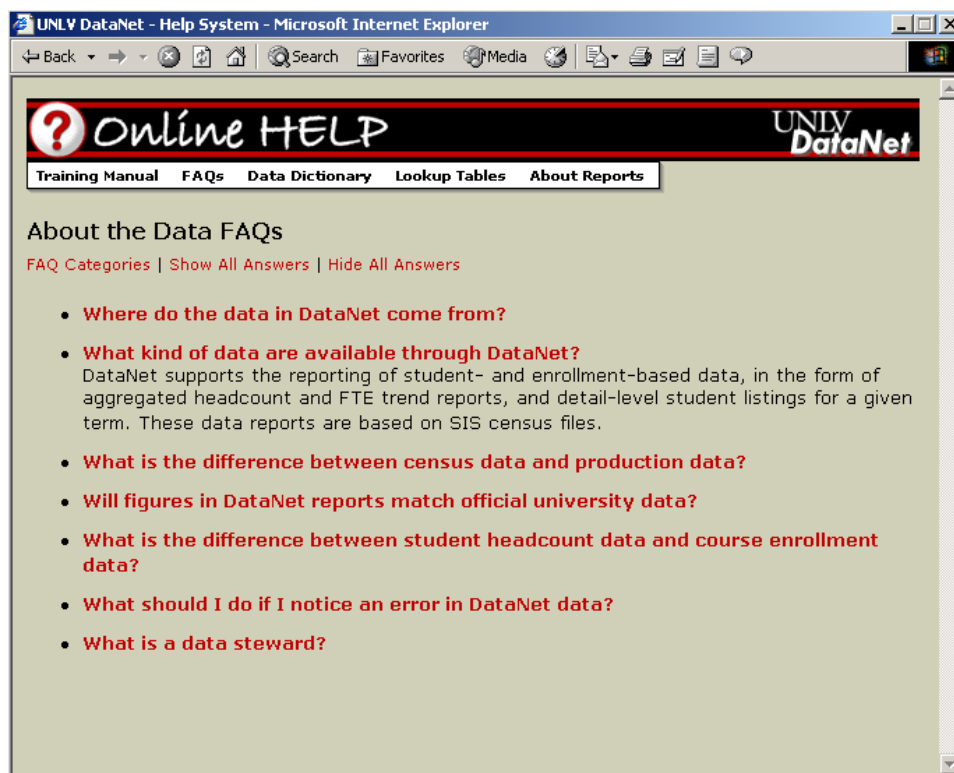
**Location:** TBD

**Details:** Time is subject to change.

Event posted by Christina Drum on 09/30/2003 4:45 PM

*DataNet is a service of the UNLV Office of Institutional Analysis & Planning  
Data access is governed by this policy.*

### Calendar of Events



UNLV DataNet - Help System - Microsoft Internet Explorer

Back Forward Stop Home Search Favorites Media Print Mail News RSS

**Online HELP** UNLV DataNet

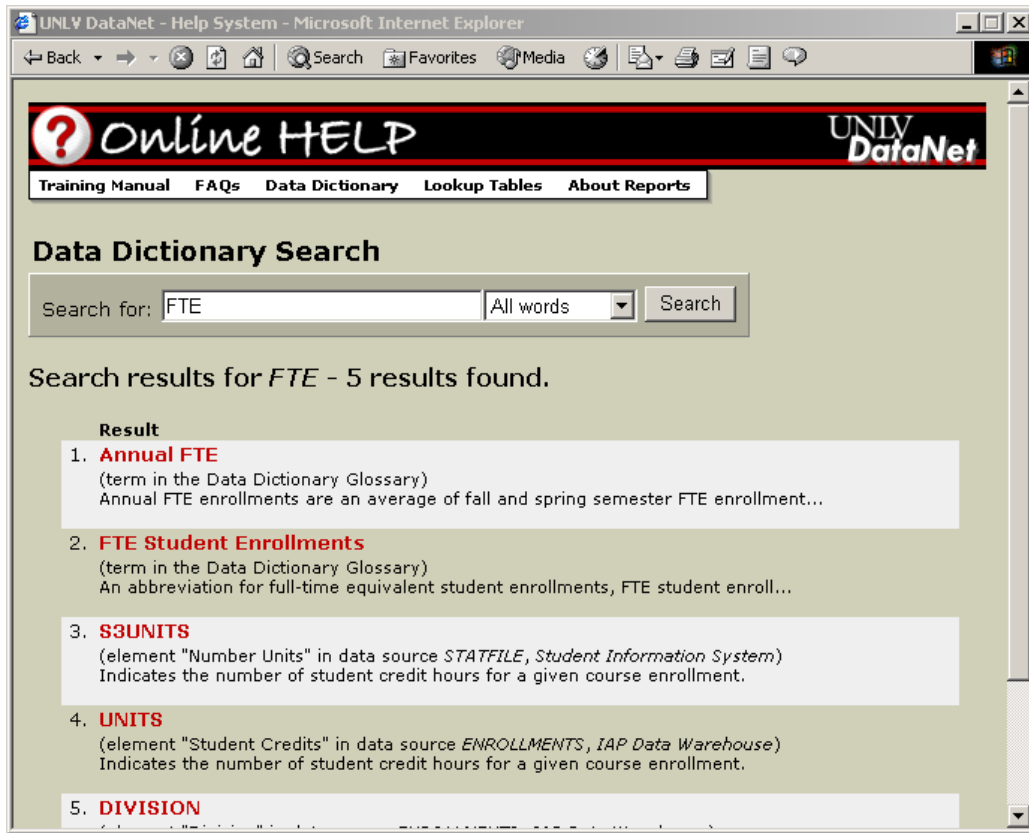
Training Manual **FAQs** Data Dictionary Lookup Tables About Reports

## About the Data FAQs

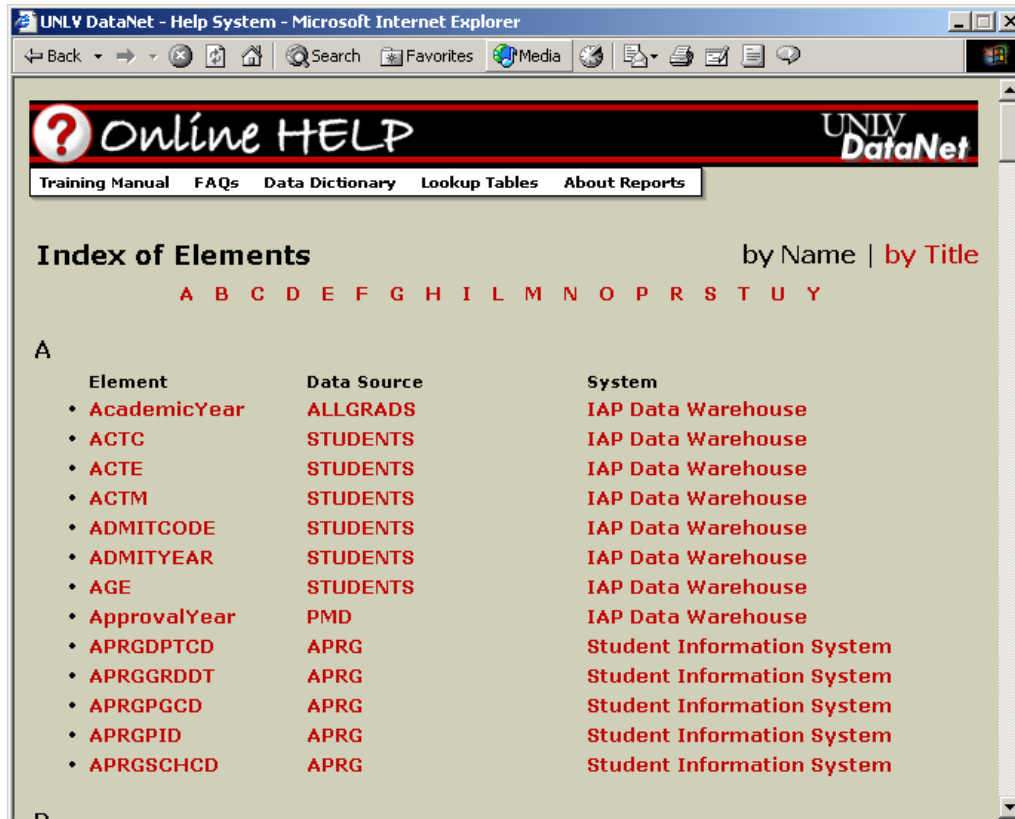
[FAQ Categories](#) | [Show All Answers](#) | [Hide All Answers](#)

- **Where do the data in DataNet come from?**
- **What kind of data are available through DataNet?**  
DataNet supports the reporting of student- and enrollment-based data, in the form of aggregated headcount and FTE trend reports, and detail-level student listings for a given term. These data reports are based on SIS census files.
- **What is the difference between census data and production data?**
- **Will figures in DataNet reports match official university data?**
- **What is the difference between student headcount data and course enrollment data?**
- **What should I do if I notice an error in DataNet data?**
- **What is a data steward?**

### Online Help: FAQs



*Data Dictionary: Search*



*Data Dictionary: Index of Data Elements*

UNLV DataNet - Help System - Microsoft Internet Explorer

Back Forward Stop Home Search Favorites Media Print Mail News Chat

# Online HELP

UNLV DataNet

[Training Manual](#) [FAQs](#) [Data Dictionary](#) [Lookup Tables](#) [About Reports](#)

## IAP Data Warehouse

Data Source: **STUDENTS**  
Element: SCHOOL

**Display Title**  
College

**Description**  
Indicates the student's college of major--that is, the college that houses the student's major program of study.

**Datatype**  
varchar(4)

**Origin**  
Defined as custom field in FOCUS script

Note: This field is NOT extracted from the S1SCHOOL statfile field in SIS. Rather, because S1SCHOOL='GC' for all graduate student records, an alternate approach is used so as to identify the college that houses each student's major program of study.

The following script defines a custom field to pull school codes based on the student's billing program, S1BPC:

```
JOIN S1BPC IN STATFILE TO PGRMKEY IN PGRM AS 'G'  
SCHCD/A5 = IF PGRMLVCD EQ 'G' THEN PGRMPGRPCD1 ELSE PGRMSCHCD;
```

Additionally, the following filter is applied to remove certain historical Continuing Education records:

```
WHERE SCHCD NE 'CE'
```

**Possible Values**  
Typically a two-character text string

**Interpretation**  
College codes and their equivalent long names are shown in the College Codes lookup table. From Online Help, choose Lookup Tables > College Codes.

**Steward Information**  
Steward: Mike Ellison  
Position: Systems Analyst  
Department: Institutional Analysis and Planning  
Phone: 895-3771  
Email: mellison@ccmail.nevada.edu



UNLV DataNet - Help System - Microsoft Internet Explorer

Back Forward Stop Home Search Favorites Media

**Online HELP** UNLV DataNet

Training Manual FAQs Data Dictionary Lookup Tables About Reports

## Glossary of Terms

**Annual FTE**  
Annual FTE enrollments are an average of fall and spring semester FTE enrollments (see FTE student enrollments).

**Cohort**  
A group of students identified by defined characteristics at a specific point in time, and at subsequent intervals. For example, student retention rates are calculated using a technique called cohort survival: an initial group of students (such as first-time freshmen) is identified during the first semester they enrolled and tracked during subsequent fall semesters to determine the percentage of the cohort remaining from year to year. Graduation rates are similarly calculated after four, five and six years.

**FTE Student Enrollments**  
An abbreviation for full-time equivalent student enrollments, FTE student enrollments are part of the legislatively approved formula for funding instruction.

Until fiscal year 2001, FTE student enrollments were calculated as follows: undergraduate student credits were divided by 15, and graduate student credits were divided by 8. Effective FY 2002, the formula for FTE student enrollments is: undergraduate student credits are divided by 15; masters-level credits are divided by 12; and doctoral credits are divided by 9.

Full-time equivalent students should be distinguished from the Registrar's classification of full-time students, which is a classification of individual students (see Full-time students).

For more information, see Understanding the New FTE Formula at:  
[http://ir.unlv.edu/help/Understanding\\_the\\_New\\_FTE\\_Formula.pdf](http://ir.unlv.edu/help/Understanding_the_New_FTE_Formula.pdf)

*Data Dictionary: Glossary of Terms*

UNLV DataNet - Help System - Microsoft Internet Explorer

Back Forward Stop Home Search Favorites Media

**Online HELP** UNLV DataNet

Training Manual FAQs Data Dictionary Lookup Tables About Reports

Department Codes	
Code	Name
ACC	Accounting
ANT	Anthropology
ARC	Architecture, School of
ART	Art
BIS	Biological Sciences
BUS	College of Business
CEG	Civil & Environmental Engineering
CHE	Chemistry
CLS	Clinical Lab Sciences
COM	Communication Studies - COM
COS	Communication Studies - COS
COU	Counseling
CRJ	Criminal Justice
CRT	Certification Programs
CSC	Computer Science, School of

*Lookup Tables: Departments*

UNLV DataNet - Help System - Microsoft Internet Explorer

← Back → Search Favorites Media

**? Online HELP** UNLV DataNet

Training Manual FAQs Data Dictionary Lookup Tables About Reports

## Headcount Trends

This report displays student **headcount** totals or other student-based measures across multiple terms for comparison. Column headers show individual terms, with row headers representing one or more groupings, up to three levels.

The following form options are available:

- Terms**  
 The choice among Fall and Spring terms which will appear in the report as columns.
- Cohort**  
 The group of students to count. A selection of a cohort besides *All Students* serves to narrow the resulting headcount figures. The following cohorts are available:
  - First Time Freshmen* - Students attending college for the first time following high school. See the data element **IsFTF** for more details.
  - Millennium Scholars* - Students who received a Millennium Scholarship during a given term. See the data element **IsMILL** for more details.
  - Transfer Students* - Students who have transferred to UNLV, according to the data element **BADM**.
  - New Transfer Students* - Students who have transferred to UNLV and are new to the institution, according to the data elements **BADM** and **SStatus**.
- Measure**  
 A choice of one of the following to aggregate:
  - Student Headcount* - Total count of students within the selected cohort.

*About Reports: Headcount Trends*



## DataNet

**D**ataNet was developed by the Office of Institutional Analysis and Planning to extend its capacity to provide management information to UNLV administrators and faculty. With support from the leadership of such campus areas as Administration, Student Enrollment & Financial Services, Student Life, and Information Technology, this project was initially sponsored as part of the 2002-03 UNLV Planning Initiative Awards.



Building DataNet entailed the creation of a data warehouse populated with student census information and the development of applications that make the data directly accessible to campus users via a secure, user-friendly website. The Student Information System (SIS) remains the official data repository for UNLV student information. [Read more...](#)

### How to Request Access

To request access to DataNet, send an email to [iap@ccmail.nevada.edu](mailto:iap@ccmail.nevada.edu) with the following information:

- *Your name, title and department*
- *Your email address and phone*
- *The name and email address of your supervising dean or director*
- *A brief explanation of how you intend to use DataNet*

After we receive your information, we will initiate the electronic approval process\* at which time we will email you a form with further instructions. Once you complete the form, it will be automatically routed to your supervising dean/director and the associate registrar for approval. After approval, you will participate in a mandatory training session that covers user responsibilities and hands-on training with the application. The training will cost \$25, payable via an IDR to Institutional Analysis and Planning, and will first be offered in November.

**Please note:** If you request access between October 15 and October 17, you can expect to receive the emailed form during the week of October 20.

\*The electronic approval process requires that both you and your supervising dean/director have Lotus Notes accounts that you access with the Notes client software. If either of you does not use Lotus Notes, paper forms will be made available.

