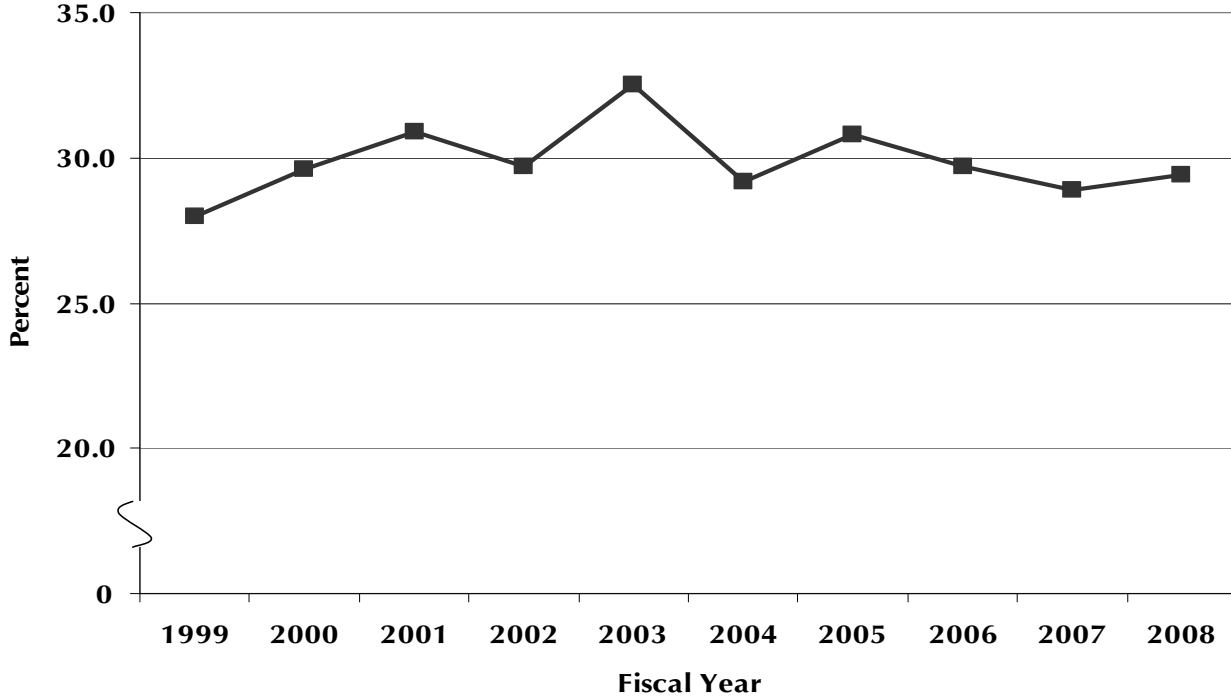


TOTAL REVENUES
UNIVERSITY OF NEVADA, LAS VEGAS
STATE APPROPRIATIONS
FY 1999 - 2008

Tuition and Fees as a Percentage of Total Revenues
Ten-Year Comparison



Revenue by Source:	FY 1999	% of Total	FY 2008	% of Total
General Funds	\$ 85,896,628	70.2	\$ 192,717,696	68.5
Other Revenue Sources¹	\$ 36,464,558	29.8	\$ 88,621,441	31.5
Registration Fees	22,186,811	18.1	50,550,716	18.0
Non-Resident Tuition	11,594,396	9.5	30,654,812	10.9
Miscellaneous Student Fees	549,111	0.4	1,363,757	0.5
Indirect Cost Recovery	942,604	0.8	-	-
Operating Capital Investment	673,789	0.6	1,313,283	0.4
Miscellaneous	7,847	0.0	4,738,873	1.7
Estate Tax Credit	510,000	0.4	-	-
Reverted to State ²	80,481		-	
Total Revenue	\$ 122,280,705	100.0	\$ 281,339,137	100.0

Notes: 1) Includes Schools of Law, Dental Medicine, Intercollegiate Athletics and Statewide Programs.

2) Revenue dollars reverted to the State of Nevada and therefore are not reflected in FY99 expenditures.

Source: NSHE Operating Budget (Budget to Actual Comparison)