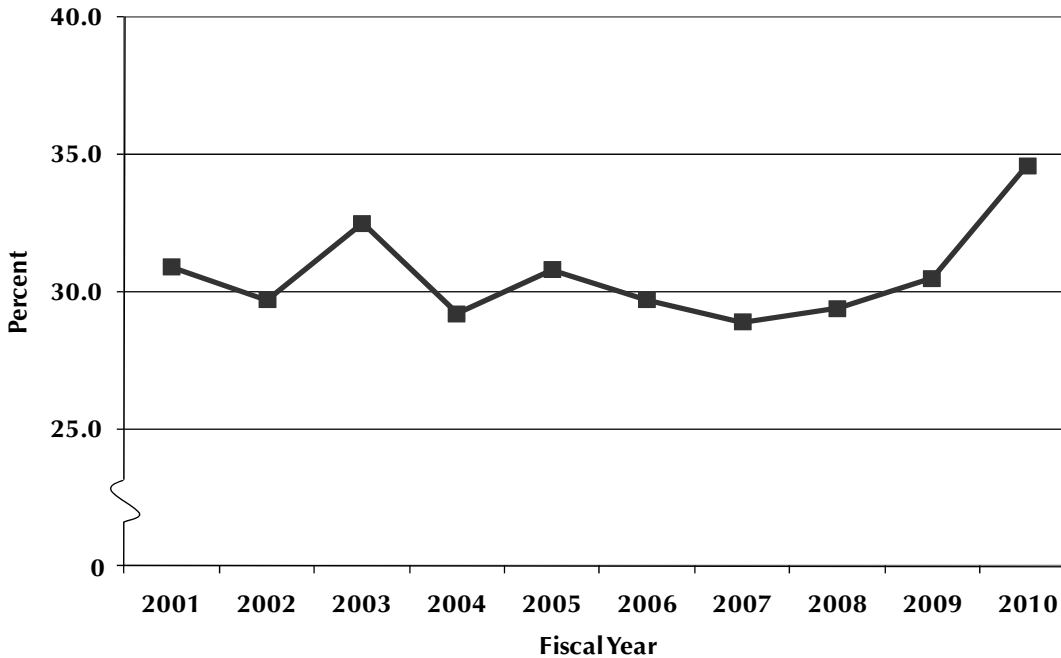


TOTAL REVENUES
UNIVERSITY OF NEVADA, LAS VEGAS
STATE APPROPRIATIONS

FY 2001 - 2010

Tuition and Fees as a Percentage of Total Revenues
Ten-Year Comparison



Revenue by Source:	FY 2001	% of Total	FY 2010	% of Total
General Funds	\$ 91,589,285	67.1	\$ 115,698,854	41.5
Other Revenue Sources¹	\$ 44,929,264	32.9	\$ 162,945,769	58.5
Registration Fees	27,210,067	19.9	60,879,536	21.9
Non-Resident Tuition	14,281,869	10.5	30,231,281	10.9
Miscellaneous Student Fees	642,032	0.5	1,526,652	0.5
Registration Fee Surcharge	-	-	3,709,577	1.3
Indirect Cost Recovery	1,046,314	0.8	-	-
Operating Capital Investment	759,290	0.6	-	-
Miscellaneous	639,692	0.5	4,730,176	1.7
Federal Stimulus Funds	-	-	61,868,547	22.2
Estate Tax Credit	350,000	0.3	-	-
Reverted to State ²			(56,731)	
Total Revenue	\$ 136,518,549	100.0	\$ 278,587,892	100.0

Notes: 1) Includes Schools of Law, Dental Medicine, Intercollegiate Athletics and Statewide Programs.

2) Does not include Business Center South.

3) Revenue dollars reverted to the State of Nevada and therefore are not reflected in FY10 expenditures.

Source: NSHE Operating Budget (Budget to Actual Comparison)