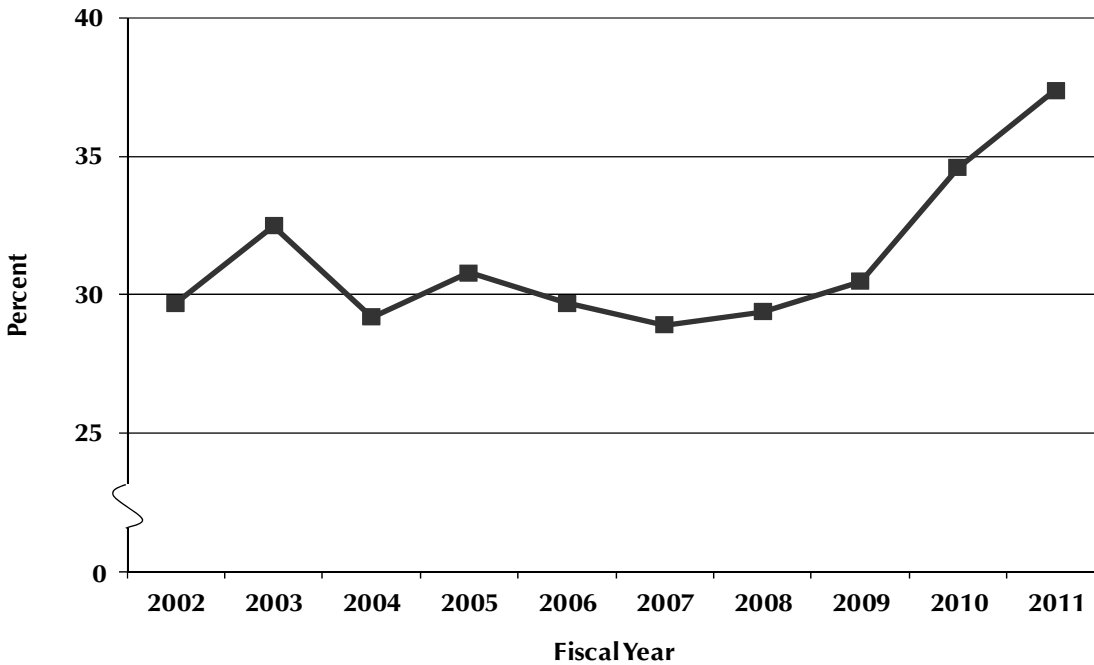


TOTAL REVENUES
UNIVERSITY OF NEVADA, LAS VEGAS
STATE APPROPRIATIONS

FY 2002- 2011

Tuition and Fees as a Percentage of Total Revenues
Ten-Year Comparison



Revenue by Source:	FY 2002	% of Total	FY 2011	% of Total
General Funds	\$ 101,715,098	65.0	\$ 167,481,945	60.9
Other Revenue Sources¹	\$ 54,940,855	35.0	\$ 107,547,910	39.1
Registration Fees	30,233,226	19.3	62,670,003	22.8
Non-Resident Tuition	15,633,045	10.0	30,908,086	11.2
Miscellaneous Student Fees	688,061	0.4	1,373,031	0.5
Registration Fee Surcharge	-	-	7,867,828	2.9
Indirect Cost Recovery	1,345,808	0.9	-	-
Operating Capital Investment	689,724	0.4	-	-
Miscellaneous	24,053	0.0	4,728,962	1.7
Estate Tax Credit	6,326,938	4.0	-	-
Reverted to State ²	163,590		-	=
Total Revenue	\$ 156,492,363	100.0	\$ 275,029,855	100.0

Notes: 1) Includes Schools of Law, Dental Medicine, Intercollegiate Athletics and Statewide Programs.

Does not include Business Center South.

2) Revenue dollars reverted to the State of Nevada and therefore are not reflected in expenditures.

Source: NSHE Operating Budget (Budget to Actual Comparison)