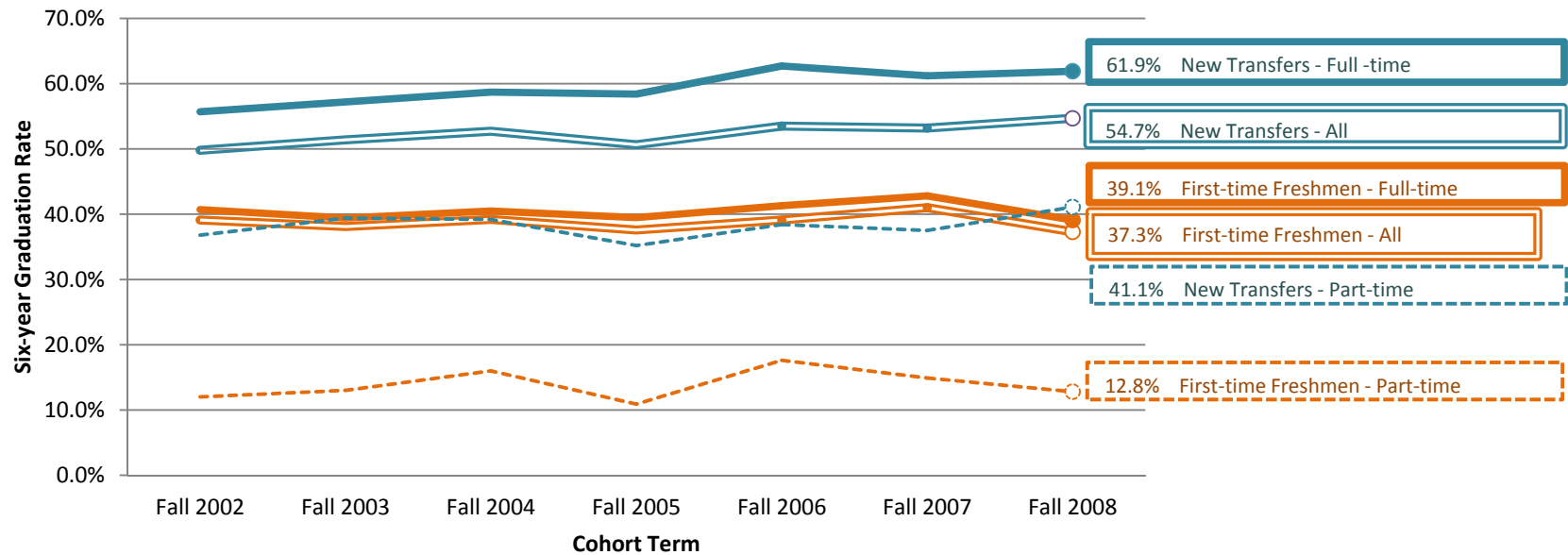


Six-year Graduation Rates of First-time Freshmen and New Undergraduate Transfers, Fall 2002 - Fall 2008 Cohorts

	Fall 2002 Cohort	Fall 2003 Cohort	Fall 2004 Cohort	Fall 2005 Cohort	Fall 2006 Cohort	Fall 2007 Cohort	Fall 2008 Cohort
First-time Freshmen	39.1%	38.1%	39.2%	37.6%	39.1%	41.0%	37.3%
Full-time	40.7%	39.4%	40.5%	39.5%	41.3%	42.8%	39.1%
Part-time	12.0%	13.0%	16.0%	10.9%	17.6%	14.9%	12.8%
New Transfers	49.8%	51.4%	52.7%	50.7%	53.5%	53.2%	54.7%
Full-time	55.7%	57.2%	58.7%	58.4%	62.7%	61.2%	61.9%
Part-time	36.8%	39.4%	39.2%	35.2%	38.4%	37.5%	41.1%



Note: Small cohort counts may limit generalizability of results.

Source: IAP Data Warehouse, UNLV Data Warehouse

Report date: 12/29/2014